

MODIFICATION ORDER

WILDLIFE AND COUNTRYSIDE ACT 1981

**WEST YORKSHIRE METROPOLITAN COUNTY COUNCIL
MODIFIED DEFINITIVE MAP AND STATEMENT**

**BOROUGH COUNCIL OF CALDERDALE
(PUDSEY ROAD TO SHAW NEW ROAD)
ORDER NO. 1, 2024**

This Order is made by the Borough Council of Calderdale under section 53(2)(b) of the Wildlife and Countryside Act 1981 ("the Act") because it appears to that authority that the West Yorkshire Metropolitan County Council Modified Definitive Map and Statement require modification in consequence of the occurrence of an event specified in section 53(3)(b) of the Act, namely,

the expiration, in relation to any way in the area to which the map relates, of any period such that the enjoyment by the public of the way during that period raises a presumption that the way has been dedicated as a public path.

The authority has consulted with every local authority whose area includes the land to which the order relates. The Borough Council of Calderdale hereby order that:

- 1 For the purpose of this order the relevant date is 9th February 2024.
- 2 The West Yorkshire Metropolitan County Council Modified Definitive Map and Statement shall be modified as described in Part I and Part II of the Schedule and shown on the map attached to the Order.
- 3 This Order shall take effect on the date it is confirmed and may be cited as the Borough Council of Calderdale (Pudsey Road to Shaw New Road) Order No. 1, 2024.

THE CORPORATE COMMON SEAL
OF THE BOROUGH COUNCIL
OF CALDERDALE was hereunto
Affixed this 22nd day of May 2024

In the presence of:



PRINCIPAL SOLICITOR
Aneeka Sarwar Muneer



SCHEDULE

PART I MODIFICATION OF DEFINITIVE MAP

Description of path or way to be added

A public footpath in the former Urban District of Todmorden as shown by a broken bold black line on the map annexed hereto, commencing at its junction with Pudsey Road at grid reference SD 9086 2637 point A and continuing in a southerly then easterly direction for 80 metres with a width of 1.3 metres and a surface of earth and grass to point B at grid reference SD 9090 2633 and continuing in an easterly direction for 23 metres with a width of 0.9 metres and a surface of earth and grass to point C and at grid reference SD 9092 2633 and continuing in an east, south easterly then north, north westerly direction for 255 metres with a width of 1.3 metres and a surface of earth and grass to point D its junction with public footpath Todmorden 60, at grid reference SD 9106 2640 There is a gap at point G grid reference SD 9108 2631, 0.3 metres wide at the base widening to 1.0 metre wide at the top. To be identified as public footpath number 216, Todmorden. All distances are as measured on site.

A public footpath in the former Urban District of Todmorden as shown by a broken bold black line on the map annexed hereto, commencing at its junction with public footpath Todmorden 60 at grid reference SD 9100 2637, point E and continuing in a generally north easterly direction for 215 metres with a width of 1.3 metres and a surface of earth and grass to point F, it's junction with public footpath Todmorden 61, at grid reference SD 9116 2649. To be identified as public footpath number 217, Todmorden. All distances are as measured on site.

PART II
MODIFICATION OF DEFINITIVE STATEMENT

Addition of Particulars of Paths or Ways

Path No	Map Reference	Description of Route	Nature of surface	Approximate Length		Width		General
				Metres	Metres	Metres	Metres	
213	SD92NW 9026/9126	A public footpath commencing at its junction with Pudsey Road and continuing in a southerly then generally easterly direction then north, north easterly direction to its termination at public footpath 60 Todmorden.	Earth	80		1.3		1 Gap
				23		0.9		
				255		1.3		
214	SD92NW 9126	A public footpath commencing at its junction with public footpath Todmorden 60 continuing in a generally north easterly direction to its junction with public footpath Todmorden 61	Grass and Earth	215		1.3		

Definitive Map Modification Order.
Addition of public footpaths east of Pudsey Road,
Cornholme, Todmorden.
OS Sheet SD9126.
Ref: 3.15.1.15T

Rights of Way

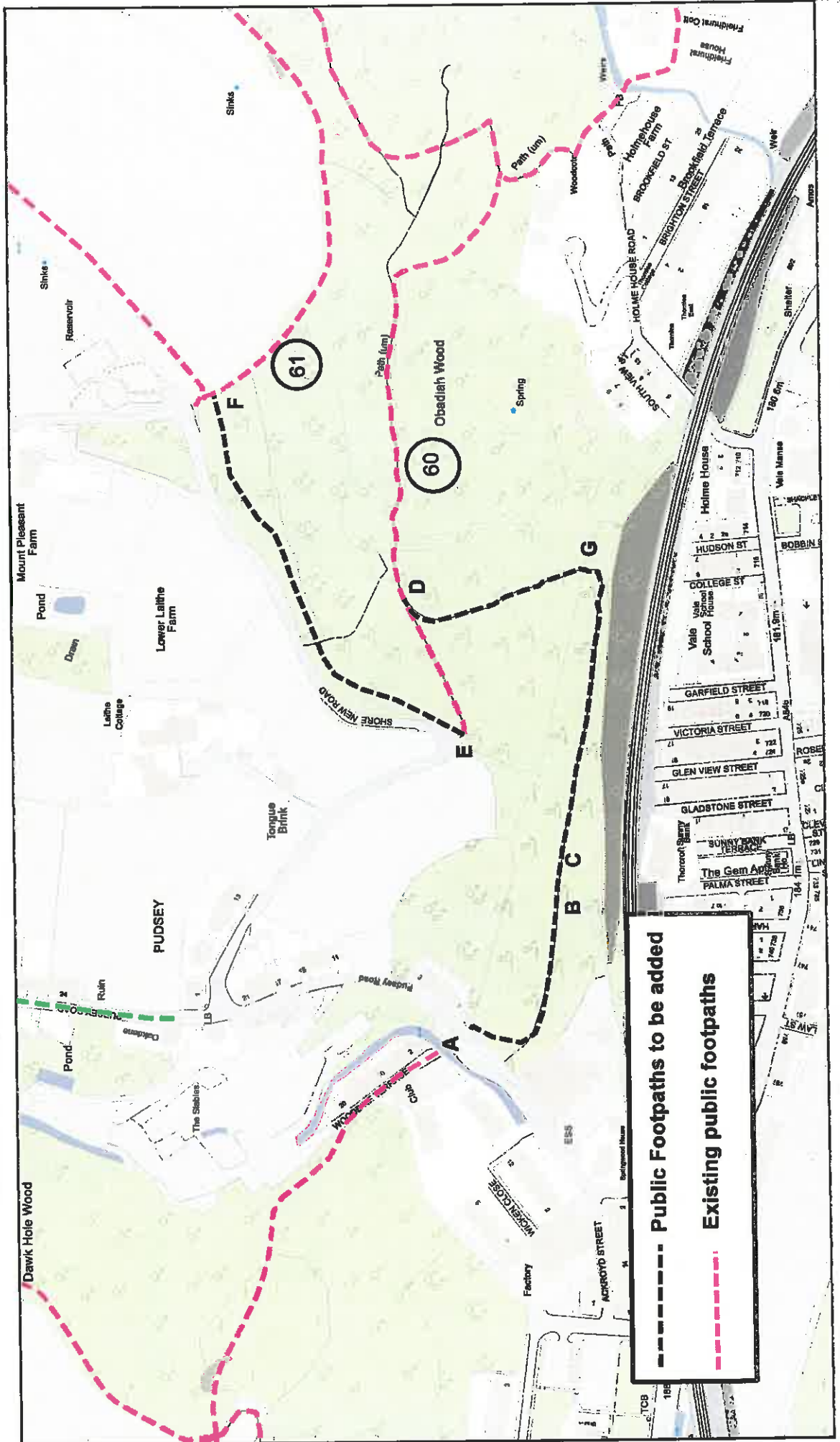
Drawn By: AA

© Crown copyright and
database rights 2024
Ordnance Survey
0100023069.

Date: 06 March 2024

Scale: 1:2500

Map Centre: 391009, 426397



AA

